

## District Career Dual Enrollment: 2012-13 Enrollment Report



Florida Department of Education  
Division of Career and Adult Education  
Rod Duckworth, Chancellor

January 2014

# District Career Dual Enrollment: 2012-13 Enrollment Report

## *Definition of Career Dual Enrollment*

Florida Statutes define dual enrollment as one of several articulated acceleration mechanisms (early admission, advanced placement, credit by examination, International Baccalaureate, and other postsecondary early entrance opportunities) where students enroll in postsecondary instruction and receive both postsecondary and secondary credit.<sup>1</sup> The intent is to broaden curricular options, increase depth of study options available to students and shorten the time necessary for completing the requirements for earning a high school diploma and a postsecondary certificate or degree.

Through dual enrollment, public, private and home education secondary students may enroll in postsecondary courses creditable toward both high school graduation and a career certificate or an associate or baccalaureate degree. There are two curricular avenues for students to participate in dual enrollment: early college (college credit) and career dual enrollment. Early college dual enrollment refers to academic or college credit coursework at the postsecondary level that leads to a college credit certificate or degree. Early college dual enrollment is available through Florida colleges and universities.

Career dual enrollment is a curricular option of elective credits toward earning the high school diploma and completing a career certificate program and is available through district career centers and Florida colleges. Career dual enrollment is not intended to enable students to take isolated courses unrelated to a program. School districts must inform all students of the option and eligibility criteria. Students participating in dual enrollment are exempt from the payment of registration, tuition, laboratory fees and other fees, such as technology fees and parking decal fees, typically assessed with tuition.

The key feature of dual enrollment is the award of both secondary and postsecondary credit, not the location of instruction. Applied Academics for Adult Education, developmental courses and other pre-collegiate instruction are ineligible for dual enrollment credit because students do not receive postsecondary credit. Physical education skills courses are also ineligible for dual enrollment.

## *Career Dual Enrollment Data*

In 2012-13, eighty-seven percent (87%) of career dual enrollment took place in district career centers and thirteen percent (13%) took place in colleges. District career dual enrollment has decreased from 5,958 students in 2011-12 to 5,793 students in 2012-13. Several districts experienced declines in their total headcount while others reported increases. For example, Orange County School District, which accounted for thirty-seven percent (37%) of the total headcount of dual enrollment of students for the 2011-12 school year, reported a fifty-five percent (55%) decline in dual enrollment headcount for the 2012-13 school year. In contrast, Santa Rosa County School District reported a dual enrollment headcount of 599 students for the 2012-13 school year compared with 182 students reported for the 2011-12 school year.

Fifty-seven percent (57%) of district career dual enrollment students in 2012-13 were male and the majority of the total population (64%) was identified as a minority. In 2012-13, Miami-Dade and Orange County School Districts reported the highest career dual enrollment headcount. Orange and Broward County School Districts reported the highest career dual enrollment FTE.

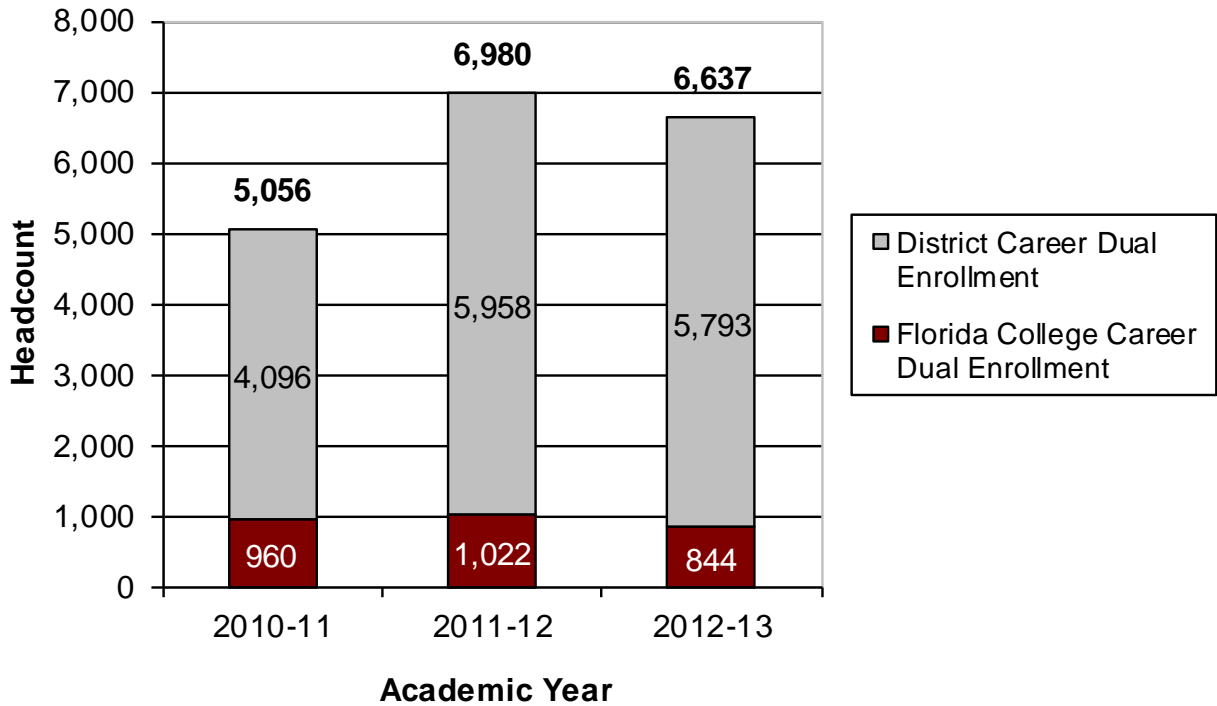
---

<sup>1</sup> Section 1007.271, F.S.

The district career dual enrollment programs with the highest headcounts were Commercial Foods and Culinary Arts, Medical Administrative Specialist, Automotive Service Technology, Aircraft Powerplant Mechanics and Aircraft Airframe Mechanics.

Exhibit 1

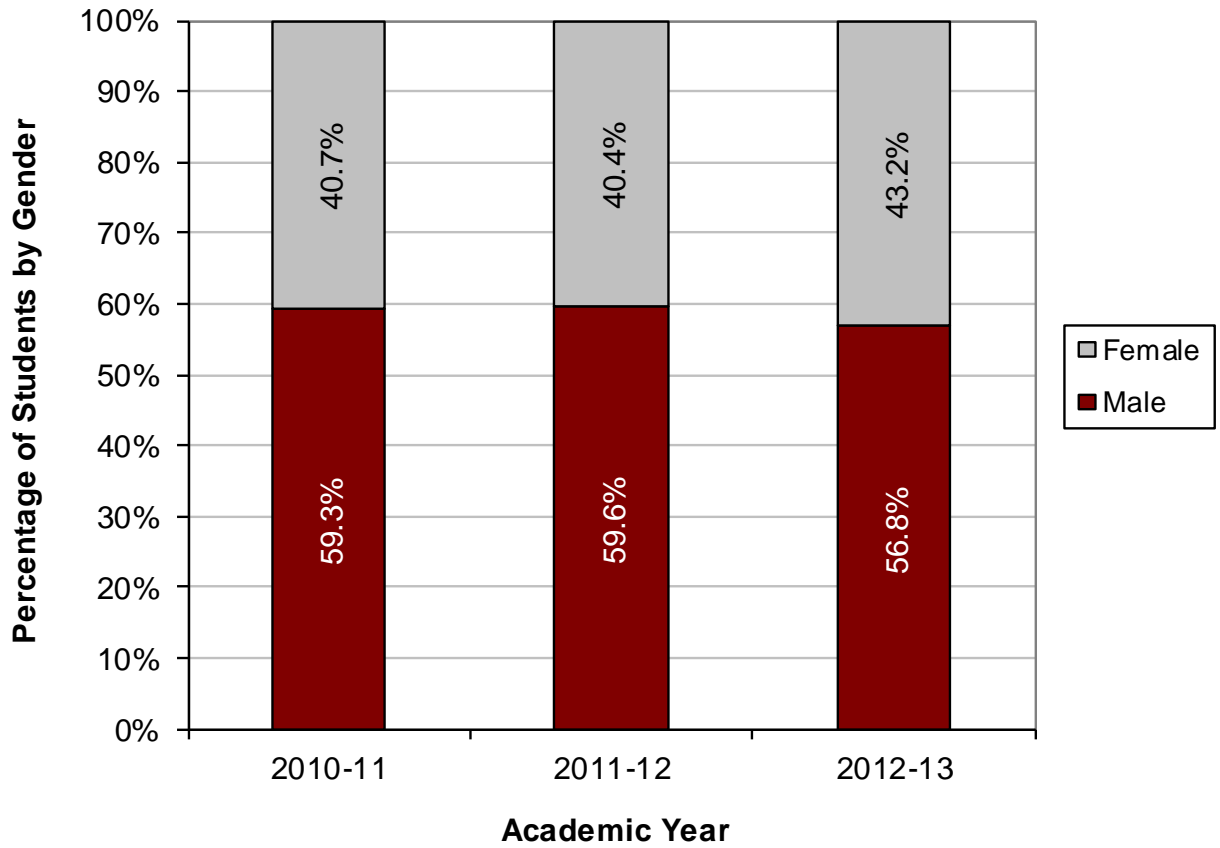
District and college career dual enrollment headcount and percent of enrollment from 2010-11 to 2012-13



Source: Community College Student Database and Workforce Development Information System

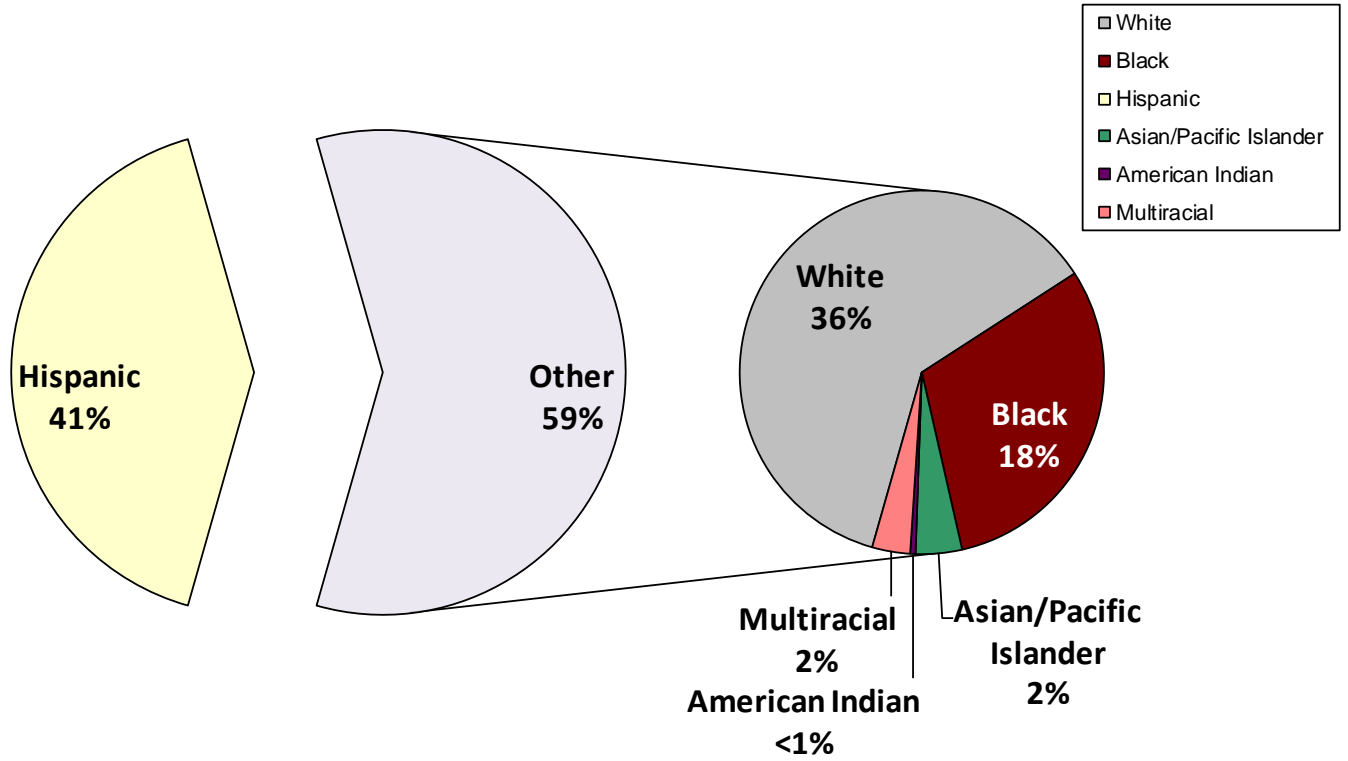
Exhibit 2

Percent of district career dual enrollment students by gender from 2010-11 to 2012-13



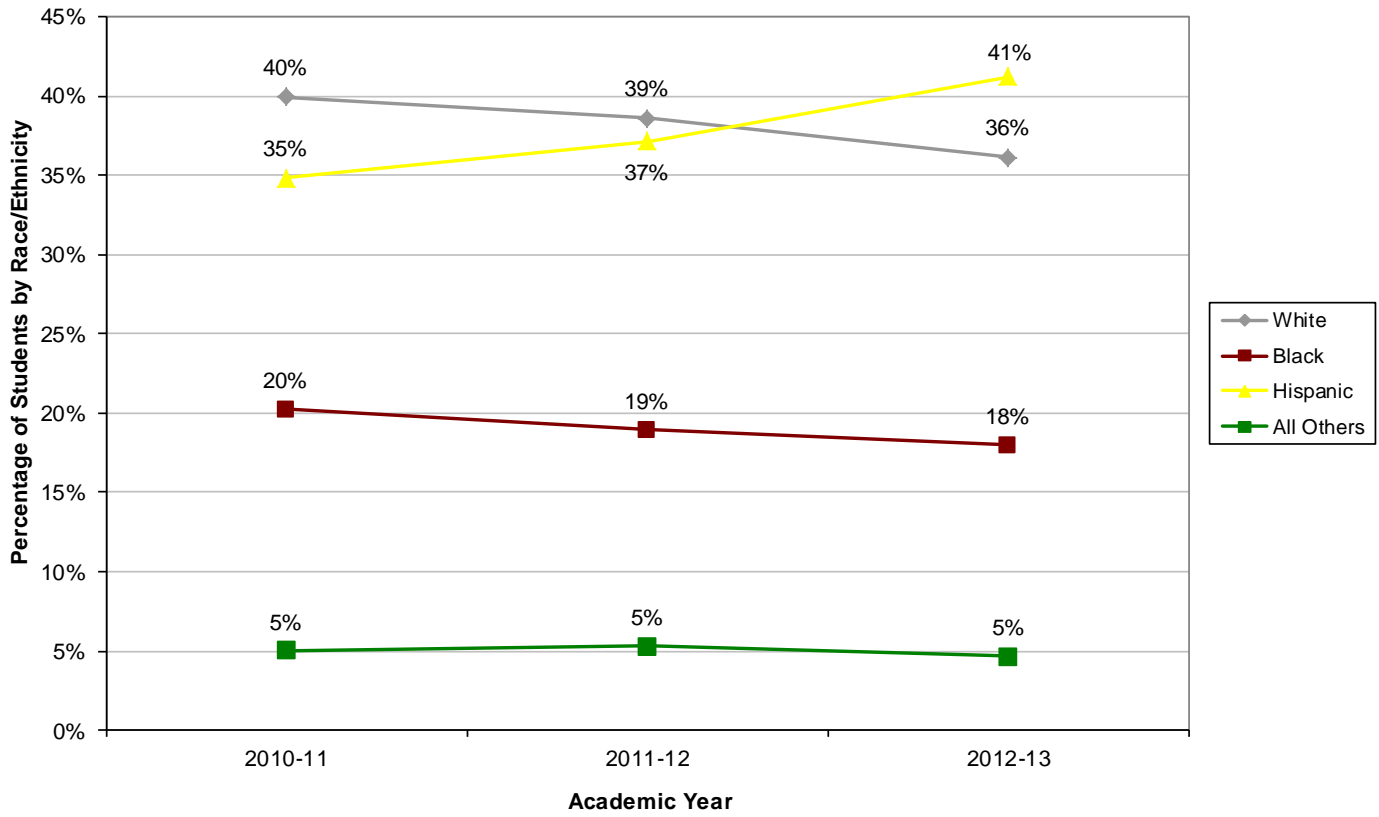
Source: Workforce Development Information System

Exhibit 3  
Percent of district career dual enrollment students by race/ethnicity for 2012-13



Source: Workforce Development Information System

Exhibit 4  
Percent of district career dual enrollment students by race/ethnicity from 2010-11 to 2012-13



Source: Workforce Development Information System

Table 1  
Headcount of district career dual enrollment students by district, 2010-11 to 2012-13

Headcount of Students Dually Enrolled in District Career Certificate Programs				
District		2012-13	2011-12	2010-11 <sup>2</sup>
13	Miami-Dade	1,174	968	874
48	Orange	987	2,199	625
06	Broward	852	626	376
57	Santa Rosa	599	182	160
11	Collier	488	452	375
37	Leon	391	399	565
49	Osceola	335	265	290
41	Manatee	276	115	242
67	Washington	158	149	166
55	St. Johns	152	195	0
36	Lee	102	7	17
35	Lake	61	108	122
58	Sarasota	57	52	20
31	Indian River	29	27	15
17	Escambia	25	21	33
42	Marion	25	19	16
08	Charlotte	23	60	109
04	Bradford	17	16	16
61	Suwannee	15	22	1
66	Walton	10	16	5
09	Citrus	9	15	6
46	Okaloosa	5	0	0
18	Flagler	2	12	14
53	Polk	1	0	0
03	Bay	0	1	1
29	Hillsborough	0	0	3
62	Taylor	0	32	45
	Total	5,793	5,958	4,096

Source: Workforce Development Information System

<sup>2</sup> Orange County School District reported to the Department of Education that their 2010-11 headcount was considerably underreported.

Table 2  
 Instructional hours and full-time equivalents (FTE) for district career dual enrollment students by district, 2010-11 to 2012-13

District Career Certificate Dual Enrollment Instructional Hours and FTE (Hours/900)							
District	2012-13		2011-12		2010-11 <sup>3</sup>		
	Hours	FTE	Hours	FTE	Hours	FTE	
48	Orange	503,488	559.43	589,496	655.00	276,821	307.58
06	Broward	336,393	373.77	221,428	246.03	104,339	115.93
13	Miami-Dade	282,450	313.83	249,465	277.18	246,545	273.94
11	Collier	211,286	234.76	188,648	209.61	167,853	186.50
49	Osceola	185,252	205.84	157,400	174.89	156,916	174.35
57	Santa Rosa	107,880	119.87	46,585	51.76	27,815	30.91
41	Manatee	104,515	116.13	39,973	44.41	119,491	132.77
36	Lee	77,635	86.26	1,002	1.11	7,182	7.98
67	Washington	55,064	61.18	54,784	60.87	62,092	68.99
37	Leon	54,165	60.18	59,728	66.36	45,817	50.91
35	Lake	32,688	36.32	47,629	52.92	39,377	43.75
55	St. Johns	32,237	35.82	22,261	24.73	0	0.00
58	Sarasota	19,239	21.38	16,605	18.45	9,522	10.58
17	Escambia	16,456	18.28	5,775	6.42	10,524	11.69
08	Charlotte	14,321	15.91	26,181	29.09	47,460	52.73
04	Bradford	4,415	4.91	4,119	4.58	4,675	5.19
42	Marion	3,909	4.34	3,722	4.14	3,596	4.00
09	Citrus	3,481	3.87	6,558	7.29	1,728	1.92
46	Okaloosa	2,240	2.49	0	0.00	0	0.00
31	Indian River	2,175	2.42	2,025	2.25	1,435	1.59
66	Walton	1,892	2.10	3,214	3.57	1,613	1.79
61	Suwannee	556	0.62	1,258	1.40	166	0.18
18	Flagler	292	0.32	3,206	3.56	3,520	3.91
53	Polk	270	0.30	0	0.00	0	0.00
03	Bay	0	0.00	528	0.59	501	0.56
29	Hillsborough	0	0.00	0	0.00	279	0.31
62	Taylor	0	0.00	8,347	9.27	11,765	13.07
	Total	2,052,299	2,280.33	1,759,937	1,955.49	1,351,032	1,501.15

Source: Workforce Development Information System

<sup>3</sup> Orange County School District reported to the Department of Education that their 2010-11 instructional hours were considerably underreported.



Table 3  
Headcount of district career dual enrollment students by technical center, 2012-13<sup>4</sup>

Headcount of Students Dually Enrolled in District Career Certificate Programs				
District	Technical Center			2012-13
04	Bradford	0171	Bradford-Union Technical Center	17
06	Broward	1051	Sheridan Technical Center	194
06	Broward	1291	William T. McFatter Technical Center	378
06	Broward	2221	Atlantic Technical Center	280
08	Charlotte	0161	Charlotte Technical Center	23
09	Citrus	0131	Withlacoochee Technical Institute	9
11	Collier	0281	Lorenzo Walker Institute of Technology	291
11	Collier	0581	Immokalee Technical Center	197
13	Miami-Dade	7702	South Dade Adult Education Center	95
13	Miami-Dade	7801	George T. Baker Aviation	593
13	Miami-Dade	8005	Lindsey Hopkins Technical Education Center	107
13	Miami-Dade	8901	Miami Lakes Educational Center	317
13	Miami-Dade	8911	Robert Morgan Educational Center	62
17	Escambia	0861	George Stone Area Vocational Technical Center	25
18	Flagler	0092	Flagler Technical Institute	2
31	Indian River	0032	Adult and Community Education School	29
35	Lake	0531	Lake Technical Center	61
36	Lee	0541	Fort Myers Institute of Technology	65
36	Lee	0581	Cape Coral Institute of Technology	37
37	Leon	0361	Lively Technical Center	116
41	Manatee	0211	Manatee Technical Institute	276
42	Marion	9412	Community Technical and Adult Education Center	25
46	Okaloosa	0701	Choice High School and Technical Center	5
48	Orange	1131	Orange Technical Education Center - Mid-Florida Tech	442
48	Orange	1581	Orange Technical Education Center - Orlando Tech	255
48	Orange	5783	Orange Technical Education Center - Westside Tech	183
48	Orange	5852	Orange Technical Education Center - Winter Park Tech	109
49	Osceola	0861	Technical Education Center of Osceola (TECO)	335
53	Polk	1591	Maynard A. Traviss Career Center	1
55	St Johns	0231	First Coast Technical College	152
57	Santa Rosa	0321	Radford M. Locklin Technical Center	599
58	Sarasota	0391	Sarasota County Technical Institute	57
61	Suwannee	0012	Suwannee-Hamilton Technical Center	15
66	Walton	0301	Walton Career Development Center	10
67	Washington	0141	Washington-Holmes Technical Center	158
Total				5,520

Source: Workforce Development Information System

<sup>4</sup> Unduplicated headcount of district career certificate programs only includes students enrolled in district technical centers.

Table 4

Instructional hours and full-time equivalents (FTE) for district career dual enrollment students by technical center, 2012-13<sup>5</sup>

District Career Certificate Dual Enrollment Instructional Hours and FTE (Hours/900)					
				2012-13	
District			Technical Center	Hours	FTE
04	Bradford	0171	Bradford-Union Technical Center	4,415	4.91
06	Broward	1051	Sheridan Technical Center	69,552	77.28
06	Broward	1291	William T. McFatter Technical Center	151,818	168.69
06	Broward	2221	Atlantic Technical Center	115,023	127.80
08	Charlotte	0161	Charlotte Technical Center	14,321	15.91
09	Citrus	0131	Withlacoochee Technical Institute	3,481	3.87
11	Collier	0281	Lorenzo Walker Institute of Technology	153,759	170.84
11	Collier	0581	Immokalee Technical Center	57,527	63.92
13	Miami-Dade	7702	South Dade Adult Education Center	25,340	28.16
13	Miami-Dade	7801	George T. Baker Aviation	176,890	196.54
13	Miami-Dade	8005	Lindsey Hopkins Technical Education Center	29,240	32.49
13	Miami-Dade	8901	Miami Lakes Educational Center	43,330	48.14
13	Miami-Dade	8911	Robert Morgan Educational Center	7,650	8.50
17	Escambia	0861	George Stone Area Vocational Technical Center	16,456	18.28
18	Flagler	0092	Flagler Technical Institute	292	0.32
31	Indian River	0032	Adult and Community Education School	2,175	2.42
35	Lake	0531	Lake Technical Center	32,688	36.32
36	Lee	0541	Fort Myers Institute of Technology	48,877	54.31
36	Lee	0581	Cape Coral Institute of Technology	28,758	31.95
37	Leon	0361	Lively Technical Center	13,008	14.45
41	Manatee	0211	Manatee Technical Institute	104,515	116.13
42	Marion	9412	Community Technical and Adult Education Center	3,909	4.34
46	Okaloosa	0701	Choice High School and Technical Center	2,240	2.49
48	Orange	1131	Orange Technical Education Center - Mid-Florida Tech	230,604	256.23
48	Orange	1581	Orange Technical Education Center - Orlando Tech	134,975	149.97
48	Orange	5783	Orange Technical Education Center - Westside Tech	81,907	91.01
48	Orange	5852	Orange Technical Education Center - Winter Park Tech	56,002	62.22

<sup>5</sup> Instructional hours and FTE of district career certificate programs only include students enrolled in district technical centers.

District Career Certificate Dual Enrollment Instructional Hours and FTE (Hours/900)					
				2012-13	
District		Technical Center		Hours	FTE
49	Osceola	0861	Technical Education Center of Osceola (TECO)	185,252	205.84
53	Polk	1591	Maynard A. Traviss Career Center	270	0.30
55	St Johns	0231	First Coast Technical College	32,237	35.82
57	Santa Rosa	0321	Radford M. Locklin Technical Center	107,880	119.87
58	Sarasota	0391	Sarasota County Technical Institute	19,239	21.38
61	Suwannee	0012	Suwannee-Hamilton Technical Center	556	0.62
66	Walton	0301	Walton Career Development Center	1,892	2.10
67	Washington	0141	Washington-Holmes Technical Center	55,064	61.18
Total				2,011,142	2,234.60

Source: Workforce Development Information System

Table 5  
Headcount of district career certificate programs for 2012-13<sup>6</sup>

District Career Certificate Program by Headcount of Dual Enrollment Students	
Program	Enrollment 2012-13
Commercial Foods and Culinary Arts	595
Medical Administrative Specialist	460
Automotive Service Technology	319
Aircraft Powerplant Mechanics	288
Aircraft Airframe Mechanics	248
Cosmetology	240
Medical Assisting	223
Electronic Technology	195
Computer Systems Technology	190
Criminal Justice Operations	158
Practical Nursing	152
Patient Care Technician	133
Automotive Collision Repair and Refinishing	132
Pharmacy Technician--PSAV	132
Administrative Office Specialist	127
Early Childhood Education	114
Applied Welding Technologies	111
Nails Specialty	108
Television Production	108
Drafting PSAV	103
Building Construction Technologies	96
Automotive Service Technology 1	78
Multimedia Design Technology	77
Network Support Services	73
Commercial Art Technology	69
Diversified Career Technology	63
Electricity	53
Pharmacy Technician--ATD	51
Digital Design 1	50
Accounting Operations	42
Nursing Assistant (Articulated)	42
Gasoline Engine Service Technology	41
Commercial Photography Technology	40
Legal Administrative Specialist	40
Facials Specialty	39
Dental Assisting	38
Phlebotomy	37
Game/Simulation/Animation Programming	36
Wireless Telecommunications	35
Automotive Detailing and Reconditioning	33
Emergency Medical Technician (Basic)	33
Medical Coder/Biller--ATD	33
Air Conditioning, Refrigeration and Heating Technology	32
Information Technology	30

<sup>6</sup> Headcount of district career certificate programs includes duplicated count of students enrolled in multiple programs.

District Career Certificate Program by Headcount of Dual Enrollment Students	
Program	Enrollment 2012-13
Java Development & Programming	30
Carpentry 1	29
3-D Animation Technology	28
Digital Audio Production	28
Business Computer Programming	27
Computer Systems Technology 1	26
Medium and Heavy Duty Truck and Bus Technician	24
Veterinary Assisting	23
Digital Design	22
Lodging Operations	22
Entrepreneurship	21
Teacher Assisting	21
Multimedia Design Technology 1	19
Marketing, Merchandising, and Parts Operations 1	18
Barbering	17
Machining	17
Nursing Assistant (Long-Term Care)	17
Digital Video Production	16
Optometric Assisting	16
Web Development	16
Avionics	15
Database and Programming Essentials	14
Medical Laboratory Assisting (Postsecondary)	14
Sewing Technology and Services	14
Game/Simulation/Animation Visual Design	13
Central Service Technology	12
Emergency Medical Technician (Basic)--ATD	12
Printing and Graphic Communications	12
Dental Laboratory Technology	11
Digital Design 2	11
Nursery Management	11
Building Trades and Construction Design Technology	10
Computer Systems & Information Technology (CSIT)	10
Medical Record Transcribing--ATD	10
Business Supervision and Management	9
Carpentry	9
Carpentry 2	9
Computer Systems Technology 2	9
Marine Service Technology	9
Multimedia Design Technology 2	9
Air Conditioning, Refrigeration and Heating Technology 1	8
Automotive Collision Repair and Refinishing 1	8
Medium and Heavy Duty Truck and Bus Technician 1	8
Home Health Aide (Postsecondary)	7
Landscape Management	7
Major Appliance and Refrigeration Repair	7
Patient Care Assistant	7
Plumbing Technology	7
Environmental Services	6

District Career Certificate Program by Headcount of Dual Enrollment Students	
Program	Enrollment 2012-13
Heavy Equipment Mechanics	6
Industrial Cooperative Education - OJT	6
Interior Decorating Services	6
Web Design	6
Web Programming Services	6
Energy Technician	5
Hemodialysis Technician	5
Marine Service Technology 1	5
PC Support Services	5
Tile Setting	5
Electronic System Assembly	4
Marketing, Merchandising, and Parts Operations 2	4
Network Systems Administration	4
New Media Technology	4
Automotive Service Technology 2	3
Customer Service Representative	3
Electrician	3
Interior Decor Fabrication	3
Marine Service Technology 2	3
Air Conditioning, Refrigeration and Heating Technology 2	2
Architectural Drafting	2
Fashion Technology and Design Services	2
Fire Fighter	2
Health Unit Coordinator (Postsecondary)	2
Sport, Recreation, and Entertainment Marketing	2
Arts, A/V Technology and Communication Cooperative Education - OJT	1
Automotive Collision Repair and Refinishing 2	1
Baking and Pastry Arts	1
Brick and Block Masonry	1
Cabinetmaking	1
Commercial Photography Technology 1	1
Court Reporting	1
Hospitality and Tourism	1
Medium and Heavy Duty Truck and Bus Technician 2	1
Sports and Recreational Turf Management	1
Web Application Development & Programming	1
Total	6,131

Source: Workforce Development Information System