

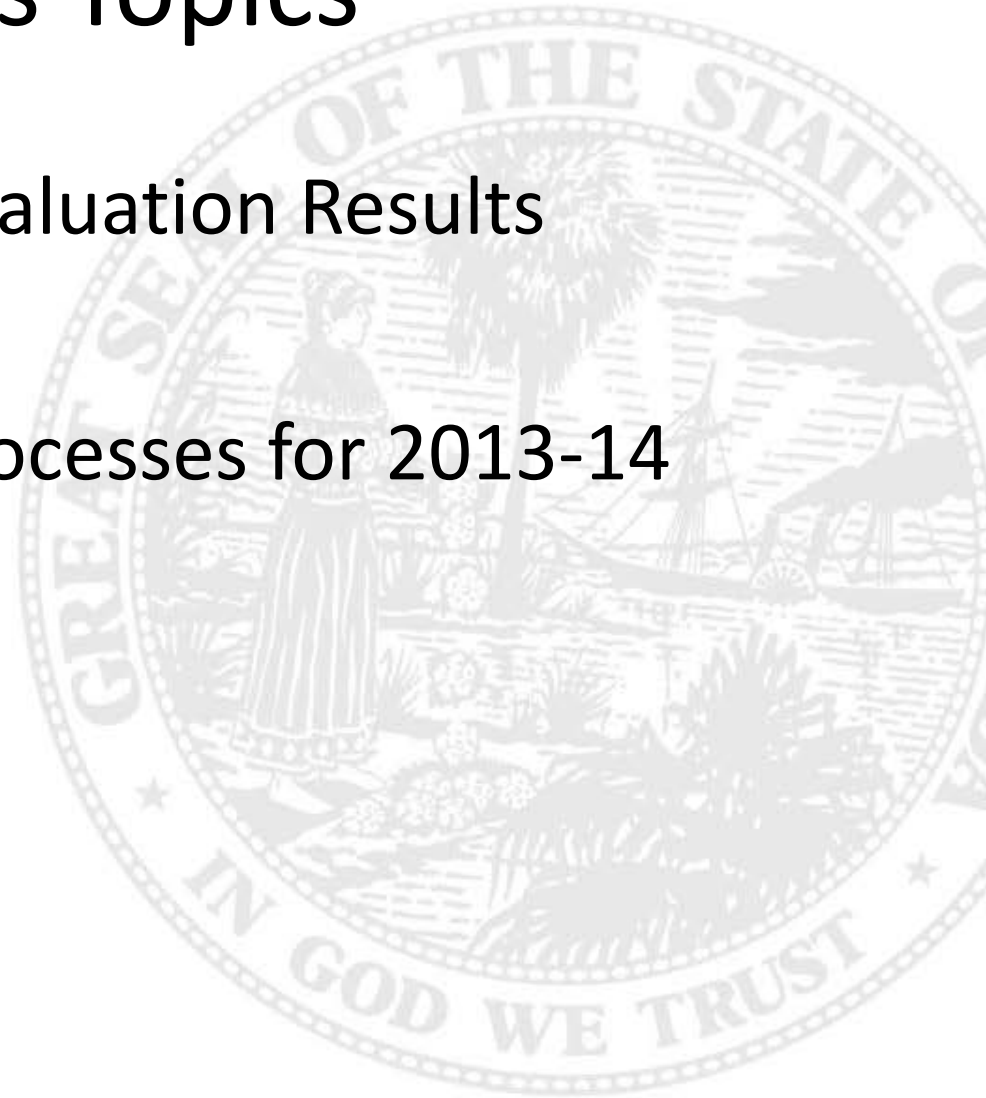
Department of Education Update

Value-added Model Technical
Assistance Meeting

August 29, 2013

Today's Topics

- Reporting 2012-13 Evaluation Results
- Rules
- Roster Verification processes for 2013-14



Reporting 2012-13 Evaluation Results

- Districts report evaluation results for instructional personnel and school administrators through the same survey 5 process used last year.
- Report should be completed by October 31, 2013
- Commissioner must report results by December 1, 2013
- If issues arise, please let us know right away, so we can assist if possible

Rules

- 6A-5.030 – Review and Approval of District Personnel Evaluation Systems
- 6A-4.0411 – Calculations of Student Learning Growth for Personnel Evaluations
- Revised text will be posted at <http://www.fldoe.org/profdev/pa.asp> (same as before), with same email address for input DistrictEvalSystRule@fldoe.org

Rules – Types of Changes Included

- Thanks for your input!
- 6A-5.0411
 - Additional definitions for highly effective and unsatisfactory; definition for needs improvement described
 - Clarifications of calculation process and other portions of the narrative
 - Separate standards for automatic unsatisfactory and the floors for effective and highly effective
- 6A-5.030
 - Streamlining and clarification of text, especially in evaluation content and monitoring requirements

Rules – District Sample Data to Review

- Simulation data to be provided to districts for review
 - Data provides a way for districts to see how statewide performance level standards would have impacted them for calculating the Performance of Students portion of the evaluation, if standards had been in place in 2011-12 and 2012-13
 - Data includes both the original standards and the new definitions in the revised draft
 - Data calculated for teachers associated with FCAT courses (districts will still be required to set equally appropriate standards for other grades and subjects)
 - Data calculated at school level for principals
- Knowing simulation data is important for districts to provide input into proposed standards and to prepare for how proposed standards may impact their evaluation results in future years

Rules – Statewide Data to Review

- Statewide results using proposed standards include the VAM scores that would be a result of cut points
- Why is this important?
 - The Aggregate VAM scores are a proportion of a year's growth
 - This score shows how much less and how much more student learning growth on average students are achieving in classrooms
 - The evaluation system is to be designed to support student learning growth.
- Knowing the impact on students is the first information necessary to guide where standards are set
- Statewide results allow districts to compare their local results to state standards

Rules – Statewide Data to Review



Roster Verification 2013-14

To calculate VAM results, district data needs to be submitted to DOE through one of the following options:

Option 1 – Roster Verification Tool

Option 2 – Survey 2 and Survey 3 from EIAS mainframe

For fall survey 2 data, the final version will be used and for spring survey 3 data, a version from May specified annually will be used.

Districts will chose which option fits their needs, charter schools must follow district option.

Roster Verification Tool (RVT) – 2013-14 Timeline

Survey 2 Roster Verification Date: Friday October 18, 2013

- **December – January:** RVT open for Survey 2 verification

Survey 3 Roster Verification Date: Friday February 14, 2014

- **April – May:** RVT open for Survey 3 verification and Survey 2-3 district and school match verification

Dates for closing the tool and for capturing district survey 2 and 3 data for those using option 2

Roster Verification Tool (RVT) – 2013-14 Enhancements

1. Add a roster for any staff reported in the staff database
 2. Ability to remove a student that was added to a roster (without denying change)
 3. Survey 2-3 match requirement and online validation within the tool – need feedback
 - To be a part of a conference call next week to discuss this process, please email classroster@fldoe.org by COB tomorrow
- Other suggestions?

Notes from today's meeting will be posted next week at <http://www.fldoe.org/profdev/studentgrowth.asp>

QUESTIONS?

