

District Career Dual Enrollment: 2009-10 Enrollment Report



Florida Department of Education
Division of Career and Adult Education
Loretta Costin, Chancellor

November 2011

District Career Dual Enrollment: 2009-10 Enrollment Report

Definition of Career Dual Enrollment

Florida Statutes define dual enrollment as one of several articulated acceleration mechanisms (early admission, advanced placement, credit by examination, International Baccalaureate, and other postsecondary early entrance opportunities) where students enroll in postsecondary instruction and receive both postsecondary and secondary credit.¹ The intent is to broaden curricular options, increase depth of study options available to students, and shorten the time necessary for completing the requirements for earning a high school diploma and a postsecondary certificate or degree.

Through dual enrollment, public, private, and home education secondary students may enroll in postsecondary courses creditable toward both high school graduation and a career certificate or an associate or baccalaureate degree. There are two curricular avenues for students to participate in dual enrollment: early college (college credit) and career dual enrollment. Early college dual enrollment refers to academic or college credit coursework at the postsecondary level that leads to a college credit certificate or degree. Early college dual enrollment is available through Florida colleges and universities.

Career dual enrollment is a curricular option of elective credits toward earning the high school diploma and completing a career-preparatory certificate program and is available through district career centers and Florida colleges. Career dual enrollment is not intended to enable students to take isolated courses unrelated to a program. School districts must inform all students of the option and eligibility criteria. Students participating in dual enrollment are exempt from the payment of registration, tuition, laboratory fees, and other fees, such as technology fees and parking decal fees, typically assessed with tuition.

The key feature of dual enrollment is the award of both secondary and postsecondary credit, not the location of instruction. Applied Academics for Adult Education, college preparatory instruction, developmental courses, and other pre-collegiate instruction are ineligible for dual enrollment credit because they are not receiving postsecondary credit.² Physical education skills courses are also ineligible for dual enrollment.

Career Dual Enrollment Data

In 2009-10, seventy-seven percent (77%) of career dual enrollment took place in district career centers and twenty-three percent (23%) took place in colleges. District career dual enrollment has decreased from 5,401 students in 2008-09 to 4,795 students in 2009-10. Several districts experienced declines in their total headcount while others reported modest increases. For example, Osceola School District, which accounted for eight percent (8%) of the total headcount of dual enrollment of students for the 2008-09 school year, reported a sixty-five percent (65%) decline in dual enrollment headcount for the 2009-10 school year. In contrast, Broward School District reported a thirty-one percent (31%) increase in dual enrollment headcount for the 2009-10 school year.

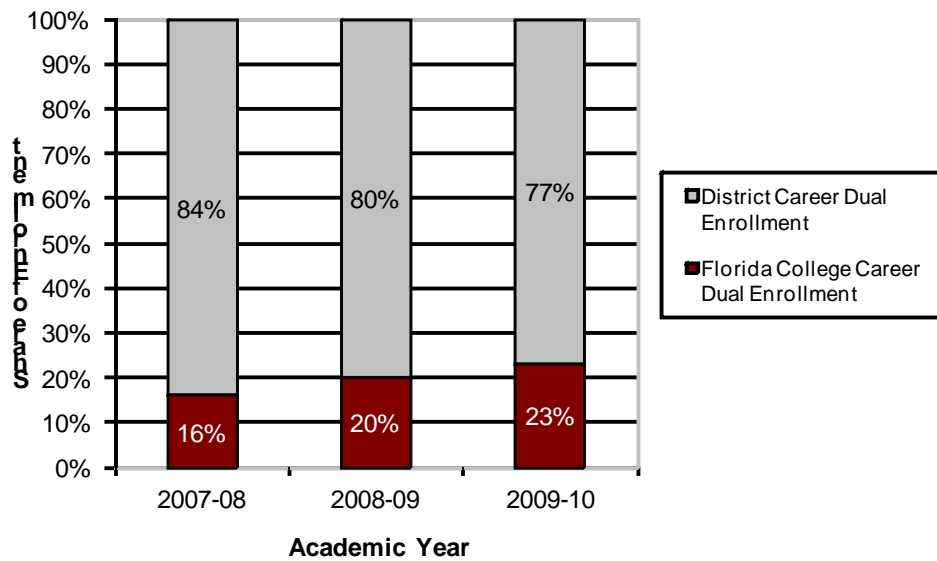
¹ Section 1007.271, F.S.

² Career preparatory instruction was renamed "Applied Academics for Adult Education" effective July 2011.

Fifty-eight percent of district career dual enrollment students in 2009-10 were male and the majority of the total population (62%) was identified as a minority. In 2009-10, Orange and Miami-Dade school districts reported the highest career dual enrollment headcount and also reported the highest career dual enrollment FTE. The district career dual enrollment programs with the highest headcounts were Aviation Airframe Mechanics, Commercial Foods and Culinary Arts, Criminal Justice Operations, Cosmetology, and Building Construction Technologies.

Exhibit 1

Percent of district and college career dual enrollment students from 2007-08 to 2009-10

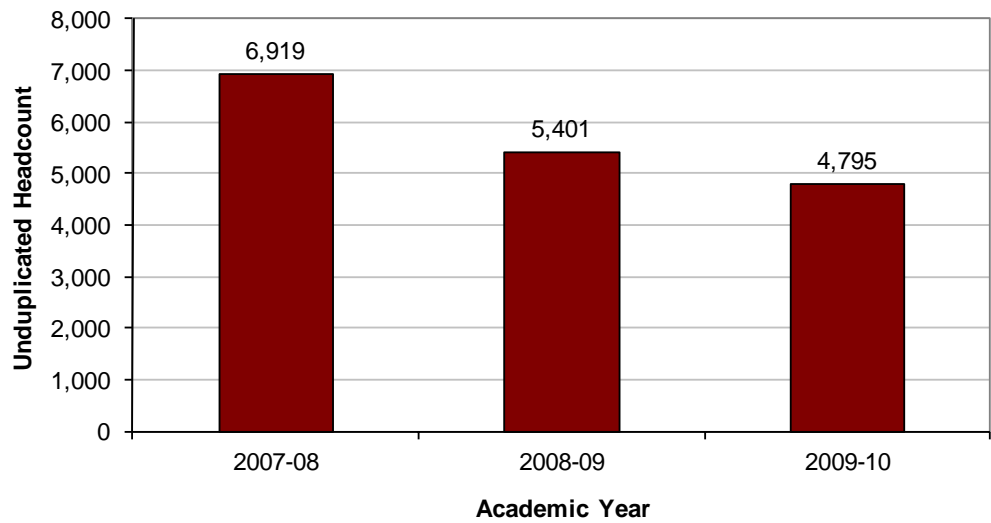


Source: Community College Student Database and Workforce Development Information System

Exhibit 2

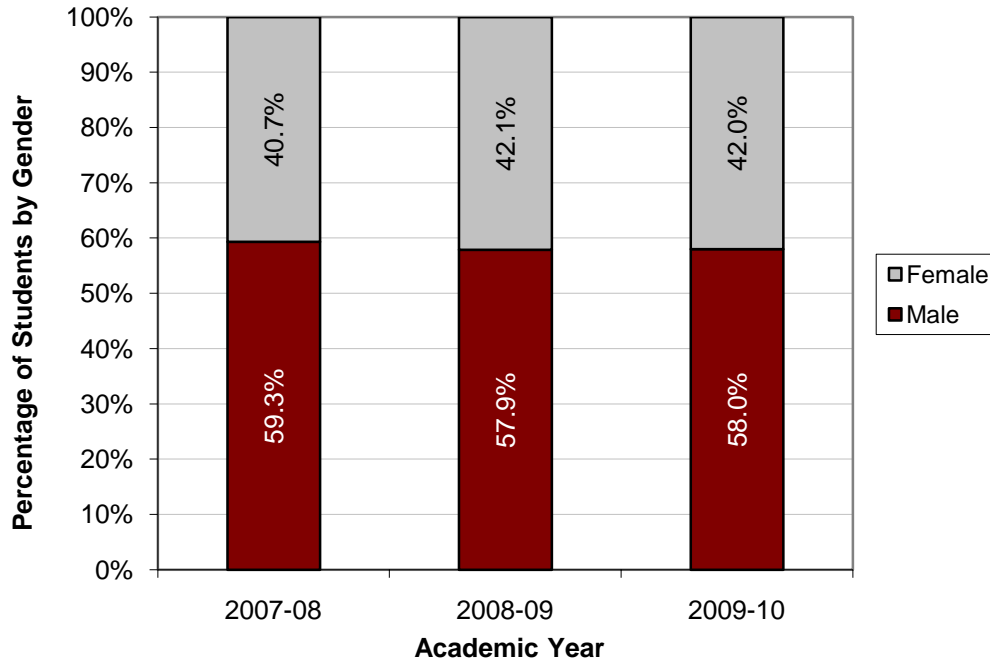
District career dual enrollment headcount from 2007-08 to 2009-10³

³ Data were reported in the Workforce Development Information System (WDIS) beginning in 2008-09. Prior year data were reported in the K-12 Database.



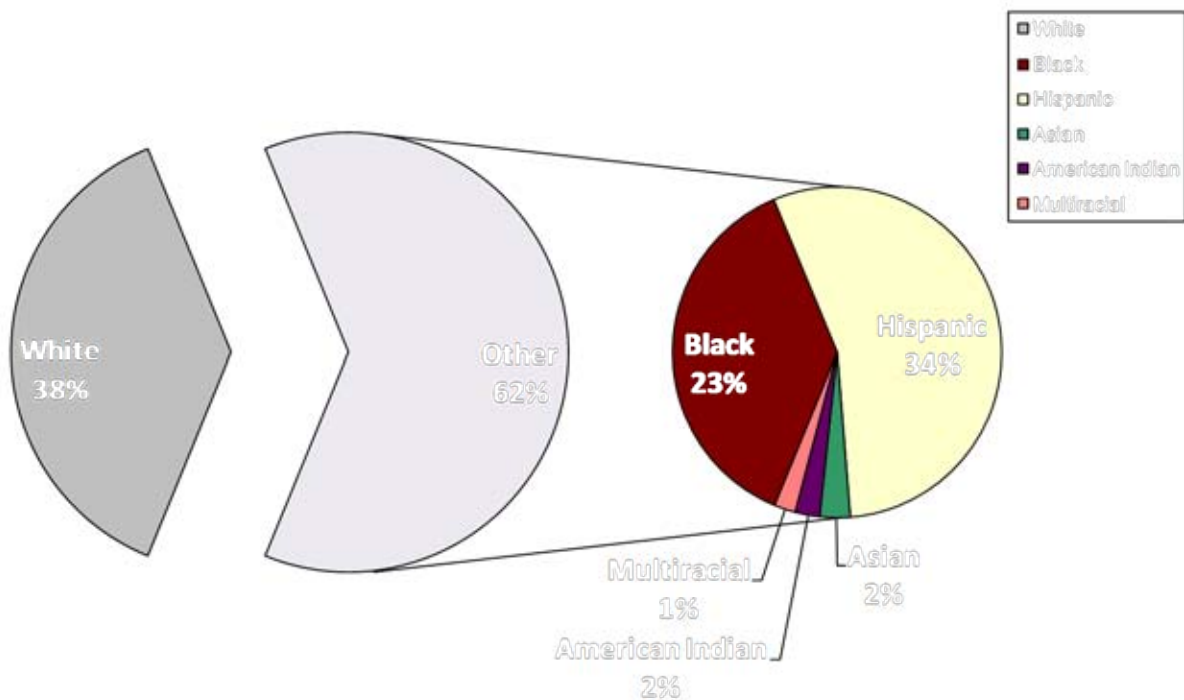
Source: Workforce Development Information System

Exhibit 3
 Percent of district career dual enrollment students by gender from 2007-08 to 2009-10



Source: Workforce Development Information System

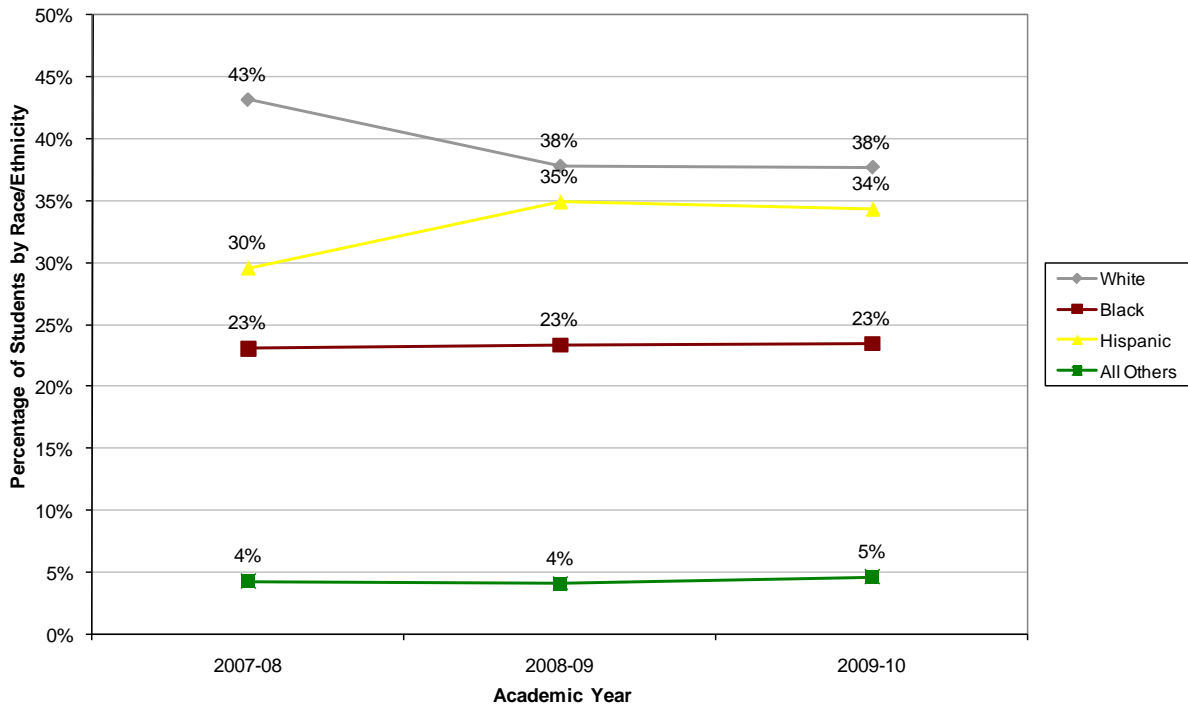
Exhibit 4
 Percent of district career dual enrollment students by race/ethnicity for 2009-10



Source: Workforce Development Information System

Exhibit 5

Percent of district career dual enrollment students by race/ethnicity from 2007-08 to 2009-10



Source: Workforce Development Information System

Table 1
Headcount of district career dual enrollment students, 2007-08 to 2009-10

Headcount of Students Dually Enrolled in District Career Certificate Programs			
District	2009-10	2008-09	2007-08
48 Orange	1,403	1,488	1,448
13 Miami-Dade	885	851	972
37 Leon	494	708	1,018
11 Collier	480	431	126
06 Broward	325	249	212
41 Manatee	315	355	438
67 Washington	170	223	237
08 Charlotte	151	167	159
49 Osceola	144	408	430
35 Lake	95	128	77
17 Escambia	67	16	38
61 Suwannee	57	64	78
57 Santa Rosa	45	99	266
62 Taylor	39	46	72
18 Flagler	24	4	31
04 Bradford	22	55	100
66 Walton	21	13	n/a
36 Lee	17	1	2
31 Indian River	15	32	43
03 Bay	5	2	n/a
09 Citrus	5	10	8
55 St. Johns	5	16	81
29 Hillsborough	4	14	1,044
58 Sarasota	4	12	n/a
42 Marion	3	9	39
Total	4,795	5,401	6,919

Source: Workforce Development Information System

Table 2
 Enrollment hours and full-time equivalents (FTE) for district career dual enrollment students,
 2007-08 to 2009-10

District Career Certificate Dual Enrollment Instructional Hours and FTE (Hours/900)							
District		2009-10		2008-09		2007-08	
		Hours	FTE	Hours	FTE	Hours	FTE
48	Orange	672,552	747.28	767,413	852.68	731,160	812.40
13	Miami-Dade	259,035	287.82	252,295	280.33	274,818	305.35
11	Collier	200,105	222.34	172,516	191.68	62,658	69.62
41	Manatee	153,613	170.68	161,190	179.10	180,926	201.03
06	Broward	145,204	161.34	125,157	139.06	99,144	110.16
37	Leon	81,869	90.97	121,011	134.46	174,748	194.16
35	Lake	69,070	76.74	39,628	44.03	40,816	45.35
08	Charlotte	52,958	58.84	56,025	62.25	52,613	58.46
67	Washington	47,189	52.43	103,421	114.91	107,716	119.68
49	Osceola	25,228	28.03	277,360	308.18	240,304	267.00
17	Escambia	14,794	16.44	14,944	16.60	19,544	21.72
36	Lee	14,784	16.43	225	0.25	1,125	1.25
62	Taylor	9,688	10.76	11,971	13.30	26,078	28.98
61	Suwannee	9,411	10.46	6,250	6.94	8,764	9.74
66	Walton	6,280	6.98	2,496	2.77	n/a	n/a
04	Bradford	5,023	5.58	10,492	11.66	28,269	31.41
18	Flagler	4,136	4.60	1,403	1.56	8,265	9.18
57	Santa Rosa	3,254	3.62	16,517	18.35	48,195	53.55
09	Citrus	1,410	1.57	4,708	5.23	5,978	6.64
55	St. Johns	1,357	1.51	8,064	8.96	25,210	28.01
42	Marion	1,140	1.27	5,105	5.67	14,498	16.11
31	Indian River	1,125	1.25	2,060	2.29	2,795	3.11
58	Sarasota	1,092	1.21	2,976	3.31	n/a	n/a
03	Bay	949	1.05	443	0.49	n/a	n/a
29	Hillsborough	188	0.21	1,301	1.45	140,322	155.91
Total		1,781,454	1,979.39	2,164,971	2,405.52	2,293,946	2,548.83

Source: Workforce Development Information System

Table 3
Headcount of district career certificate programs for 2009-10

District Career Certificate Program by Headcount of Dual Enrollment Students	
Program	Enrollment 2009-10
Aviation Airframe Mechanics	417
Commercial Foods and Culinary Arts	274
Criminal Justice Operations	269
Cosmetology	257
Building Construction Technologies	244
Automotive Service Technology	181
Medical Assisting	163
Practical Nursing	146
Commercial Foods and Culinary Arts 1	132
Avionics	125
Aviation Powerplant Mechanics	121
Automotive Collision Repair and Refinishing	106
Early Childhood Education	104
Television Production	102
Applied Welding Technologies	96
Automotive Service Technology 1	92
Architectural Drafting	91
Home Health Aide (Postsecondary)	84
Carpentry 1	82
Multimedia Design Technology	73
Medium and Heavy Duty Truck and Bus Technician	71
Administrative Assistant	66
Patient Care Assistant	66
Pharmacy Technician	64
Multimedia Design Technology 1	63
Nursing Assistant (Long-Term Care)	62
Patient Care Technician	61
Business Computer Programming	58
Nails Specialty	58
Network Support Services	54
Automotive Detailing and Reconditioning	53
Commercial Foods and Culinary Arts 2	53
Computer Systems Technology 1	52
Medical Administrative Specialist	50
Nursing Assistant (Articulated)	50
Dental Assisting	48
Facials Specialty	47
Nursery Management	45
Emergency Medical Technician (Basic)--ATD	39
Diversified Career Technology	36
Fire Fighter II	36
Web Design	36
Commercial Photography Technology	35
Veterinary Assisting	35
Computer Systems Technology	34
Health Unit Coordinator (Postsecondary)	34

District Career Certificate Program by Headcount of Dual Enrollment Students	
Program	Enrollment 2009-10
Pharmacy Technician--ATD	34
Accounting Operations	33
Electricity	33
Printing and Graphic Communications	32
Related Industrial Technology	30
Building Construction Helper	29
Digital Video Production	24
Game, Simulation & Animation Programming	24
Phlebotomy	22
Digital Audio Production	21
Multimedia Design Technology 2	21
Lodging Operations	20
New Media Technology	20
Medical Laboratory Assisting (Postsecondary)	19
3-D Animation Technology	18
Marketing, Merchandising, and Parts Operations 1	18
Commercial Art Technology	17
Optometric Assisting	17
Air Conditioning, Refrigeration and Heating Technology 1	16
Barbering	16
Environmental Services	16
Building Trades and Construction Design Technology	14
Dental Assisting Technology and Management - ATD	13
PC Support Services	13
Sewing Technology and Services	13
Marine Service Technology 1	12
Vocational Education for Students with Disabilities	12
Machining	11
Culinary Operations	10
Industrial Machinery Maintenance 1	10
Smart Homes/Mobile Electronics	9
Automotive Service Technology 2	8
Commercial Photography Technology 1	8
Customer Assistance Technology	8
Electrical Line Service and Repair	8
Heavy Equipment Mechanics	8
Legal Administrative Specialist	8
Marine Service Technology 2	8
Articulated Nursing Assistant	7
Automotive Collision Repair and Refinishing 1	7
Commercial Photography Technology 2	7
Digital Design	7
Electronic Technology	7
Electronic Technology 1	7
Emergency Medical Technician (Basic)	7
Plumbing Technology	7
Web Programming Services	7
Boatbuilding-Wood and Fabricated	6

Program	
Electrocardiograph Technology	6
Floral Design and Marketing	6
Marine Service Technology	6
Network Systems Administration	6
Dental Laboratory Technology	5
Hemodialysis Technician	5
Teacher Assisting	5
Welding Technology, Applied	5
Air Conditioning, Refrigeration and Heating Technology (PS)	4
Automotive Collision Repair and Refinishing 2	4
Commercial Art Technology 1	4
Electrical and Instrumentation Technology	4
Interior Decorating Services	4
Major Appliance and Refrigeration Repair 1	4
Medium and Heavy Duty Truck and Bus Technician 1	4
Boat and Yacht Repair/Refinishing Technology 1	3
Brick and Block Masonry	3
Major Appliance and Refrigeration Repair	3
Marketing, Merchandising, and Parts Operations 2	3
Air Conditioning, Refrigeration and Heating Technology 2	2
Boat and Yacht Repair/Refinishing Technology 2	2
Central Service Technology	2
Correctional Officer	2
Electrician	2
Hospitality and Tourism	2
Major Appliance and Refrigeration Repair 2	2
Medical Record Transcribing--ATD	2
Medical Secretary	2
Carpentry	1
Culinary Operations 1	1
Digital Design 1	1
Electronic Technology 2	1
Fashion Design Services	1
Heavy Equipment Operation	1
Industrial Machinery Maintenance 2	1
Major Appliance and Refrigeration	1
Medium and Heavy Duty Truck and Bus Technician 2	1
Sport, Recreation, and Entertainment Marketing	1
Total	5,299

Source: Workforce Development Information System